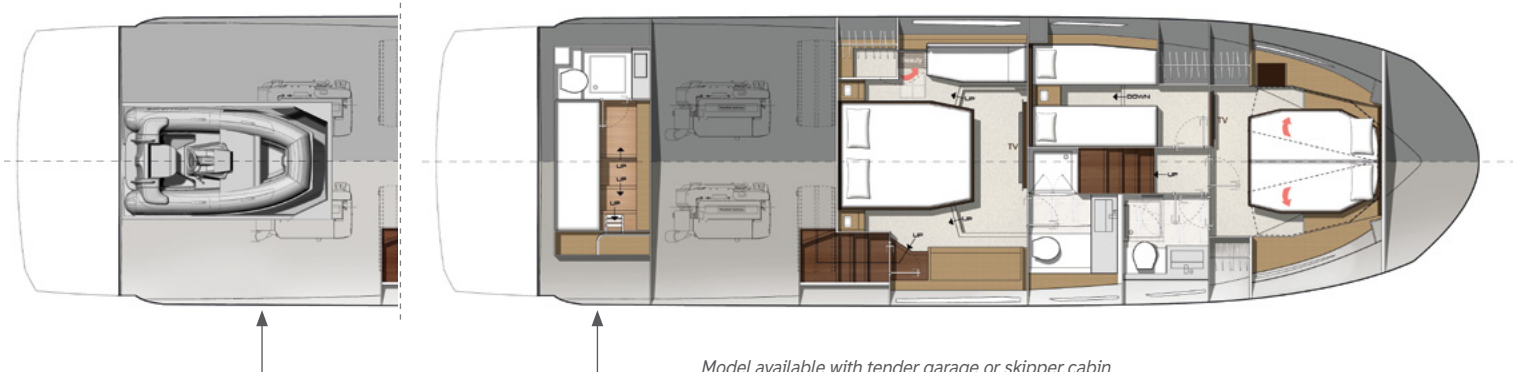
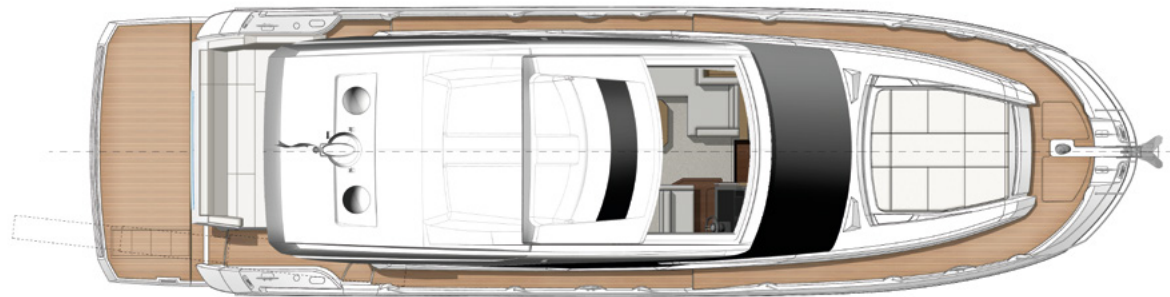




# PRESTIGE 520S

Overall length	52'10"	16,11 m
Overall beam	14'8"	4,49 m
Draft	3'5"	1,05 m
Light displacement	34 308 Lbs	15 562 kg
Fuel capacity	343 US gal	1 300 L
Water capacity	168 US gal	636 L
Hot water heater capacity	16 US gal	60 L
Accommodation	6 + 1	
Category	B-12 / C-14	
Engine	Volvo 2 x IPS 600 - D6 - 440 HP Volvo 2 x IPS 650 - D6 - 480 HP	



## ENGLISH / Standard equipment

### Deck

- Stainless steel stem head fitting with anchor roller
- Anchor stop
- Electric windlass with wired remote in anchor locker (24V)
- Chain counter and windlass controls at helm
- Anchor locker with dedicated space for fender storage
- Stainless steel cleats (10)
- Stainless steel handrails
- Stainless steel rubrail
- Foredeck sunpad area

### Bathing platform

- Teak-laid bathing platform
- Hot and cold shower
- Stainless steel bathing ladder

### Cockpit

- L-shaped seating area
- Teak-laid cockpit flooring
- Access hatch to the engine room with gas struts
- Transom safety gate
- Lateral door in coaming
- 2 marine stereo speakers
- Overhead LED lighting
- Courtesy LED lighting

### Sport Top

- Opening electric GRP roof with integrated windows with shades

### Interior helm station

- Helm console with engine throttles and maneuvering joystick, full engine instrumentation, compass and cup holders
- Twin helm sport seats
- Windscreen wipers with intermittent setting and washers
- Windscreen demister
- USB plugs
- Horn

### Saloon

- U-shaped sofa seating
- Varnished table on stainless steel base
- Sofa
- Sliding lateral door to starboard
- Side window pleated blinds
- Removable carpet set
- Radio / CD / MP3 with Bluetooth in saloon
- 2 stereo speakers

### Galley

- Stainless steel sink
- Mixing tap with pull-out sprayer
- Combination microwave / grill
- 3-zone induction cooktop
- Corian worktop
- Fridge dual voltage (178L / 47 US gal)
- Freezer dual voltage (42L / 11 US gal)
- Waste bin
- Storage drawers and cupboards
- Galley island with storage
- Wooden flooring

### Master stateroom

- Independent access via private stairway
- Double bed (200 cm x 160 cm / 6'6" x 5'2")
- 2 reading lamps
- Bedside tables with storage
- Large closet with shelving
- Storage cabinet
- Sofa
- Panoramic side windows with blinds and opening ports
- Removable carpet set

- AC and USB plugs
- En suite bathroom
- Corian countertops and washbasin
- Separate shower compartment
- Freshwater electric toilets
- Extractor fan
- AC plug
- Opening port

### VIP stateroom

- Double bed convertible into 2 single berths (200 cm x 156 cm / 6'6" x 5'1")
- 2 reading lamps
- Large closet with shelving
- Large side windows with blinds and opening ports
- Overhead skylight with opening hatch with shade / insect screen
- Removable carpet set
- AC and USB plugs
- En suite bathroom
- Corian countertops and washbasin
- Separate shower compartment
- Freshwater electric toilets
- Extractor fan
- AC plug
- Opening port

### Guest stateroom

- 2 single berths convertible in double berth (192 cm x 62 cm / 6'3" x 24")
- Reading lamp
- Bedside table with storage
- Large closet with shelving
- Large side window with opening port
- Removable carpet set
- AC and USB plugs

### Crew accommodation - Option

- Single berth (200 cm x 70 cm / 6'6" x 2'3")
- Storage closet
- Separate bathroom with toilet, washbasin and shower
- Additional holding tank (50L / 13 US gal)
- Large window on the transom with blinds
- Crew door access from cockpit

### Propulsion

- Joystick system for IPS
- IPS Nibral twin props
- Electronic power steering
- Electronic engine controls and throttles at each helm
- Single Lever, Cruise Control, Trim Computer and Low Speed functions
- Bronze seawater strainers
- Forced air ventilation system for engine room

### Electrical system

- Battery bank (24V) - Engine (100 A/h)
- Battery bank (24V) - House (280 A/h)
- Battery bank crossover switch at helm
- Tactile graphic display for battery levels, AC sources, lighting and tank levels
- Remote battery switches
- Centralized distribution and breaker boxes for AC and DC systems
- AC shore power system
- Twin battery chargers (2 x 40A - 24V)
- LED interior and exterior lighting with dimmer switches
- AC plugs in each cabin and in the galley and saloon

### Fuel system

- 2 fuel tanks (aluminum) with interconnection valves (1300L / 343 US gal)
- Fuel fills to port and starboard with crossover valve
- Remote shut-off valves in aft companionway

### Water system

- Freshwater tanks (636L / 168 US gal)
- Hot water heater (60L / 16 US gal)
- Freshwater pressure pump
- Grey water sump pump with automatic discharge
- Holding tank (170L / 45 US gal)
- Overboard discharge pumps for holding tanks with macerator function and deck pump-out
- Automatic bilge pumps (3) with high water alarm
- Manual bilge pump

### Systems

- Automatic fire extinguishers in engine room with control at each helm (Novec 1230)

### Construction

- Infused GRP hull with longitudinal infused stringers
- Infused GRP deck with counter molding
- Isophthalic gelcoat
- Osmosis barrier

### Additional standard equipment

- User and Owner's manuals
- Captain's briefcase with set of manuals

### North American specifications

- Chilled water air conditioning incorporating reverse cycle heating (55 000 BTU)
- 13.5 kW generator with underwater silent exhaust
- AGM Gel batteries bank upgrade
- Galvanic Isolator
- Cathodic bonding system with dedicated anodes
- Wooden flooring in main saloon