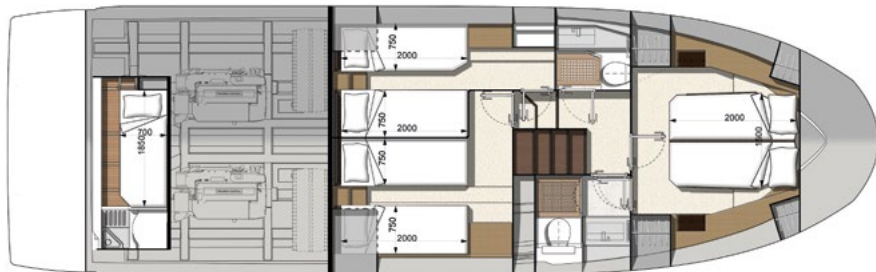
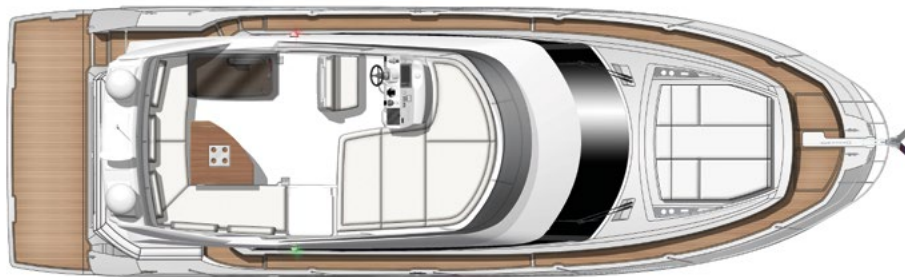




# PRESTIGE 460

Overall length	46'10"	14,29 m
Overall beam	14'1"	4,30 m
Draft	3'5"	1,05 m
Light displacement	27 780 Lbs	12 601 kg
Fuel capacity	328 US gal	1 240L
Water capacity	155 US gal	586L
Hot water heater capacity	11 US gal	40L
Accommodation	6 + 1	
Category	B - 10 / C - 12	
Engine	Volvo 2 x IPS 500 - D6 - 380 HP Volvo 2 x IPS 600 - D6 - 440 HP	



Model available with 2 or 3 staterooms

## ENGLISH / Standard equipment

### Deck

- Stainless steel stem head fitting with anchor roller
- Anchor stop
- Electric windlass with wired remote in anchor locker (12V)
- Anchor locker with dedicated space for fender storage
- Stainless steel cleats (6)
- Stainless steel handrails
- Stainless steel rubrail
- Foredeck sunpad area

### Bathing platform

- Teak-laid bathing platform
- Hot and cold shower
- Stainless steel bathing ladder

### Cockpit

- L-shaped seating area
- Teak-laid cockpit flooring
- Stainless steel ladder to flybridge with synthetic teak steps
- Access hatch to the engine room with gas struts
- Transom safety gate
- 2 marine stereo speakers
- Overhead LED lighting

### Flybridge

- Helm console with engine throttles and maneuvering joystick, compass, (12V) plug and storage compartment
- Helm station bench
- Stainless steel guard rails
- Perspex windscreen
- Seating area
- Table
- Sunpad with adjustable back rests
- GRP arch with space for antennas
- 2 marine stereo speakers

### Interior helm station

- Helm console with engine throttles and maneuvering joystick, full engine instrumentation, compass and cup holders
- Upholstered two-person helm bench
- Windscreen wipers with intermittent setting and washers
- Windscreen demister
- USB plugs
- Horn

### Saloon

- U-shaped sofa seating
- Varnished table on stainless steel base
- Sofa
- Storage cabinet / TV stand to starboard
- Side window pleated blinds
- Handrails with handstitched Foglizzo leather wrap
- Flooring through maindeck Fortezza
- Radio / CD / MP3 with Bluetooth in saloon
- 2 stereo speakers

### Galley

- Stainless steel sink
- Mixing tap
- 3-burner gas cooktop
- Corian worktop
- Fridge dual voltage (174L / 46 US Gal)
- Freezer dual voltage (16L / 4 US Gal)
- Waste bin
- Storage drawers and cupboards
- Flooring through maindeck Fortezza

### Master stateroom

- Double bed (200 cm x 160 cm / 6'6" x 5'2")
- 2 reading lamps
- Bedside tables with storage

- Large closet with shelving
- Storage cabinet
- Sofa
- Vanity desk with mirror
- Panoramic side windows with blinds and opening ports
- Removable carpet set
- AC and USB plugs
- En suite bathroom
- Solid countertop and washbasin
- Soap dispenser & toothbrush holder
- Separate shower compartment
- Freshwater electric toilets
- Extractor fan
- AC plug
- Opening port

### VIP stateroom

- Double bed (200 cm x 150 cm / 6'6" x 4'11") convertible into 2 single berths
- Large closet with shelving
- Large side windows with blinds and opening ports
- Overhead skylight with opening hatch with shade / insect screen
- Removable carpet set
- AC and USB plugs
- En suite bathroom
- Solid countertop and washbasin
- Soap dispenser & toothbrush holder
- Separate shower compartment
- Freshwater electric toilets
- Extractor fan
- AC plug
- Opening port

### Crew accommodation - Option

- Single berth (185 cm x 70 cm / 6' x 2'3")
- Storage closet
- Separate bathroom with toilet, washbasin and shower
- Additional holding tank (50L / 13 US Gal)
- Large window on the transom with blinds
- Crew door access from cockpit

### Propulsion

- Joystick system for IPS
- IPS Nibral twin props
- Electronic power steering
- Electronic engine controls and throttles at each helm
- Single Lever, Cruise Control, Trim Computer and Low Speed functions
- Bronze seawater strainers
- Forced air ventilation system for engine room

### Electrical system

- Battery bank (12V) - Engine (220 A/h)
- Battery bank (12V) - House (460 A/h)
- Battery bank crossover switch at helm
- Tactile graphic display for battery levels, AC sources, lighting and tank levels
- Remote battery switches
- Centralized distribution and breaker boxes for AC and DC systems
- AC shore power system
- Twin battery chargers (2 x 25A - 12V)
- LED interior and exterior lighting
- AC plugs in each cabin and in the galley and saloon

### Fuel system

- 2 fuel tanks (aluminium) with interconnection valves (1240L / 328 US Gal)
- Fuel fills to port and starboard with crossover valve
- Remote shut-off valves in aft cabin

### Water system

- Freshwater tanks (586L / 155 US Gal)
- Hot water heater (40L / 11 US Gal)
- Freshwater pressure pump

- Grey water sump pump with automatic discharge
- Holding tank (120L / 32 US Gal)
- Holding tank vent filters
- Overboard discharge pumps for holding tanks with macerator function and deck pump-out
- Automatic bilge pumps with high water alarm (2)
- Manual bilge pump

### Systems

- Fire extinguishers in engine room with manual pull handle (Novec 1230)

### Construction

- Hand-laid GRP hull
- Hand-laid GRP deck with counter molding
- Isophthalic gelcoat
- Osmosis barrier

### Additional standard equipment

- User and Owner's manuals
- Captain's briefcase with set of manuals

### North american specifications

- Chilled water air conditioning incorporating reverse cycle heating (42 000 BTU)
- Generator with underwater silent exhaust (13,5kW)
- AGM Gel batteries bank upgrade
- Galvanic Isolator
- Cathodic bonding system with dedicated anodes